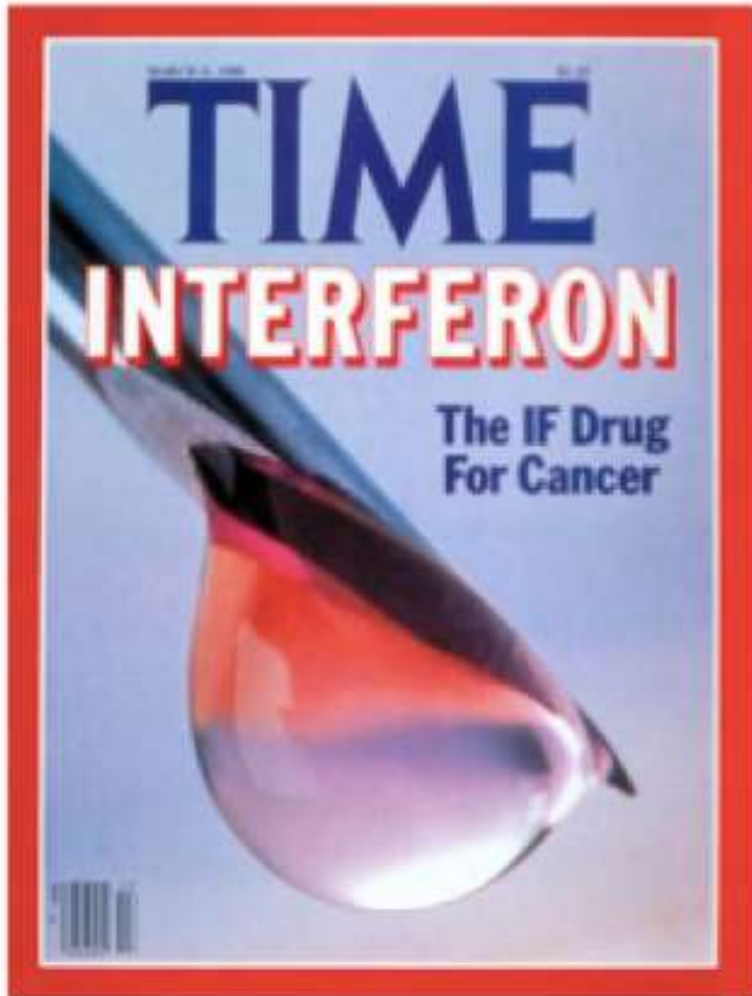


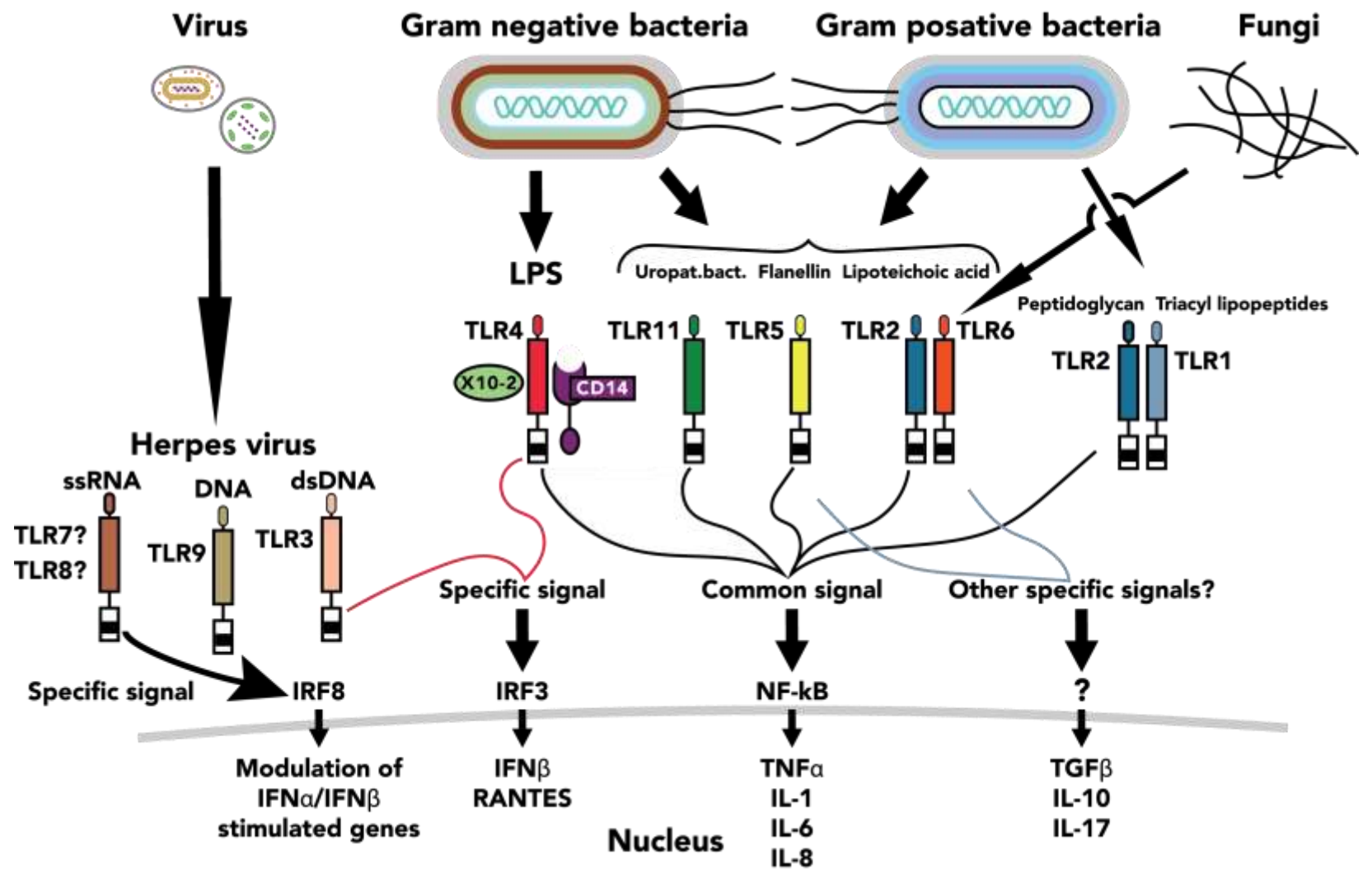


'Lifting the Veil' Part III
ANSWERS: Stepping Outside the Box
Sunday 15 May 2016

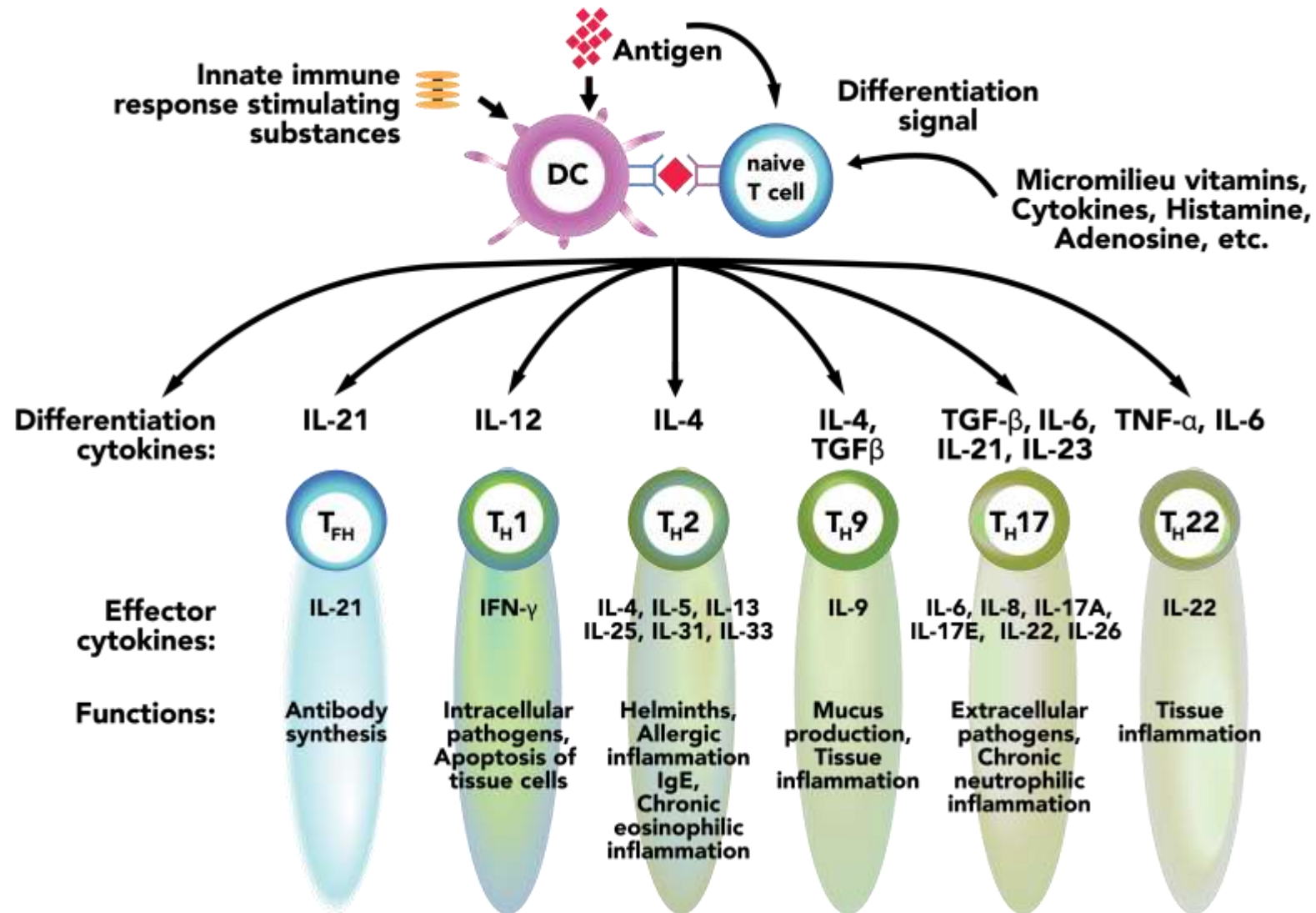
36 Years of Immune Therapy: Lessons Learned?



SIMULTANEOUS INNOCULATION OF MULTIPLE ANTIGENS TRIGGERS A CYTOKINE STORM

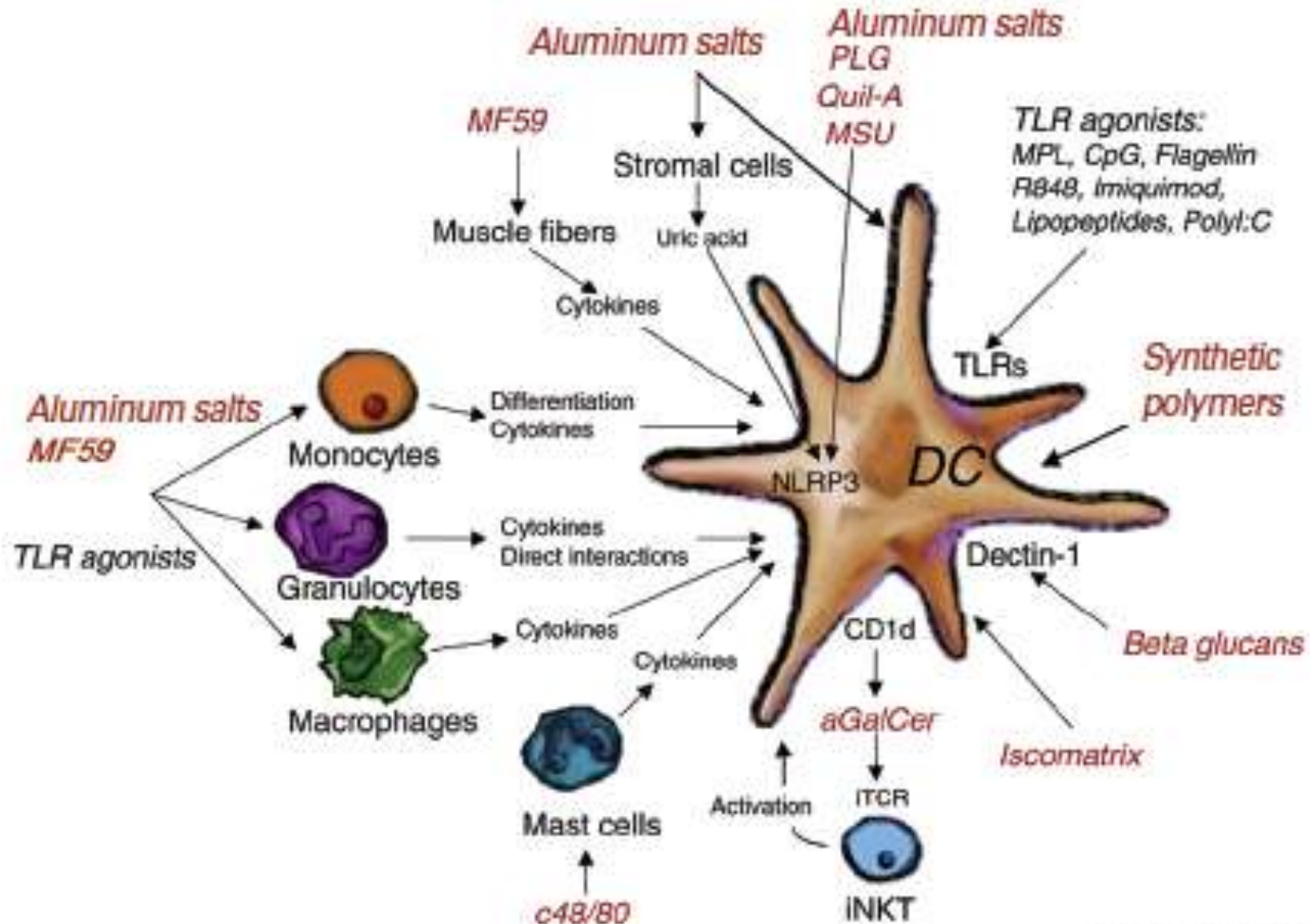


PLASTICITY IN THE IMMUNE RESPONSE

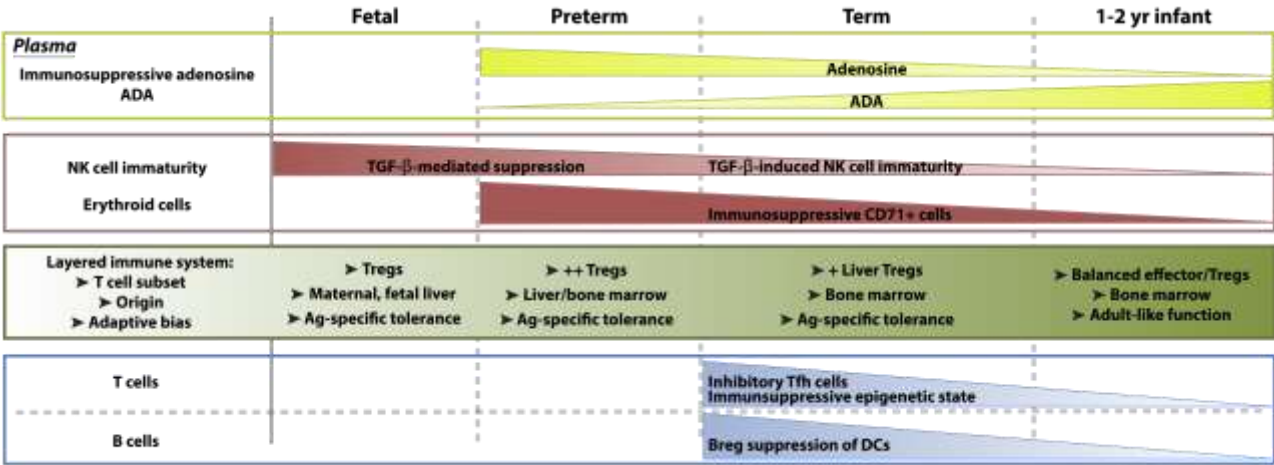
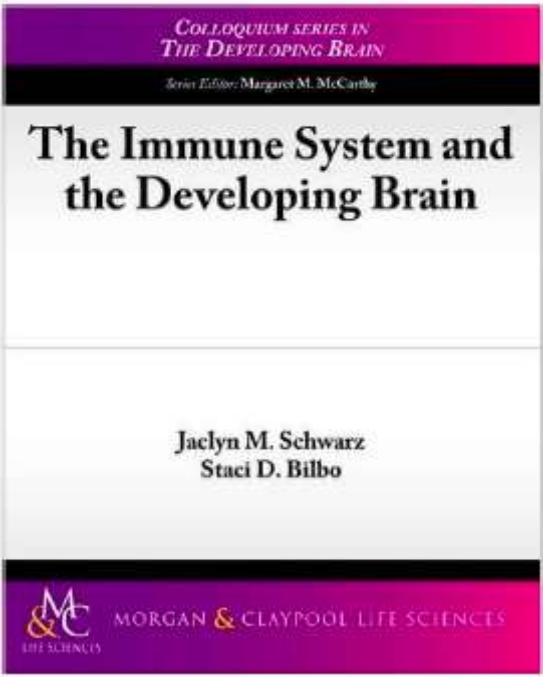


T cell responses to vaccination differ from those induced by infectious challenge

Unintended Consequences of Inappropriate Immune Activation



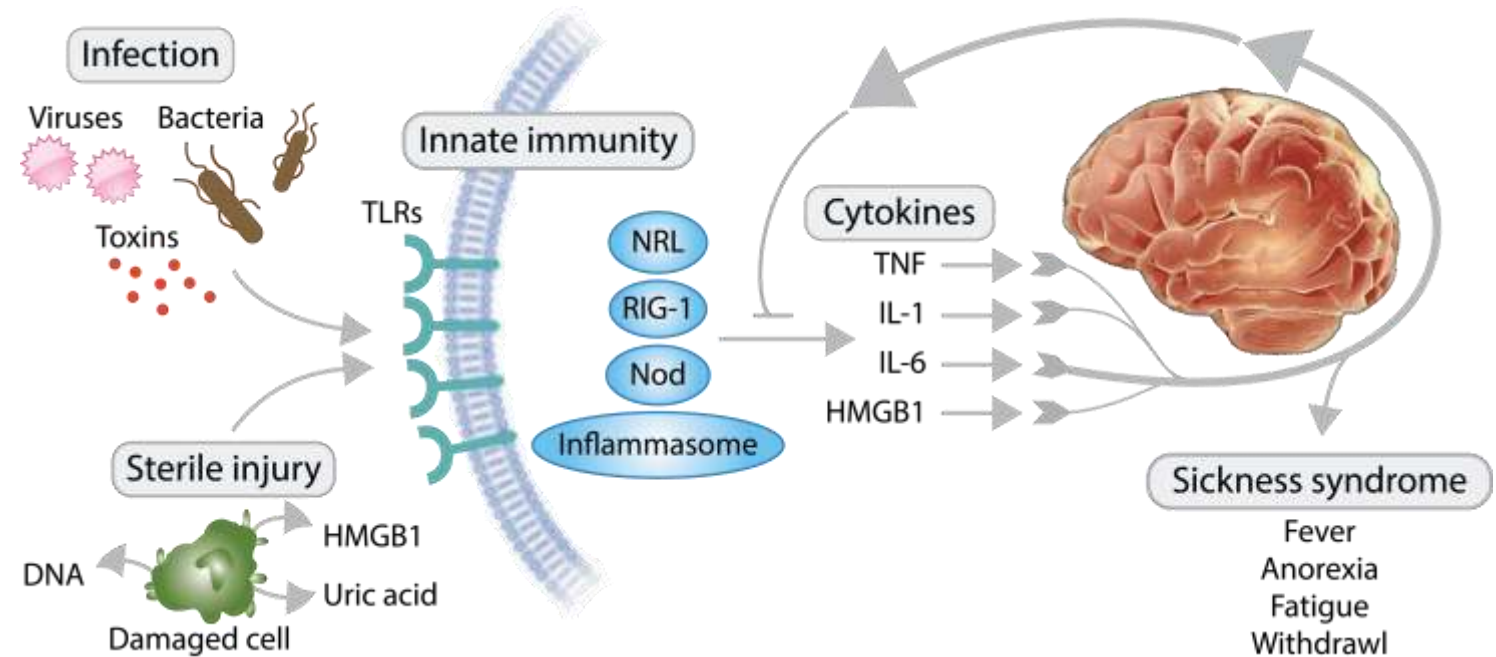
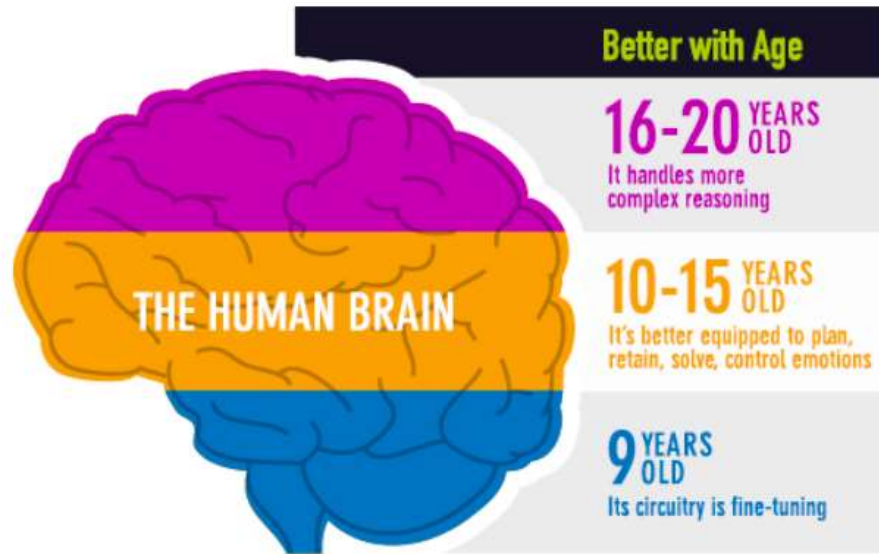
ADVANCES IN TECHNOLOGY REVEAL UNINTENDED CONSEQUENCES OF CURRENT VACCINE STRATEGIES:



TRENDS in immunology

The Brain and the Immune System are Inextricably Linked
Immunity is not static: it changes with age with unique features throughout life

- The Brain cannot tolerate the introduction of antigens without eliciting an inflammatory immune response

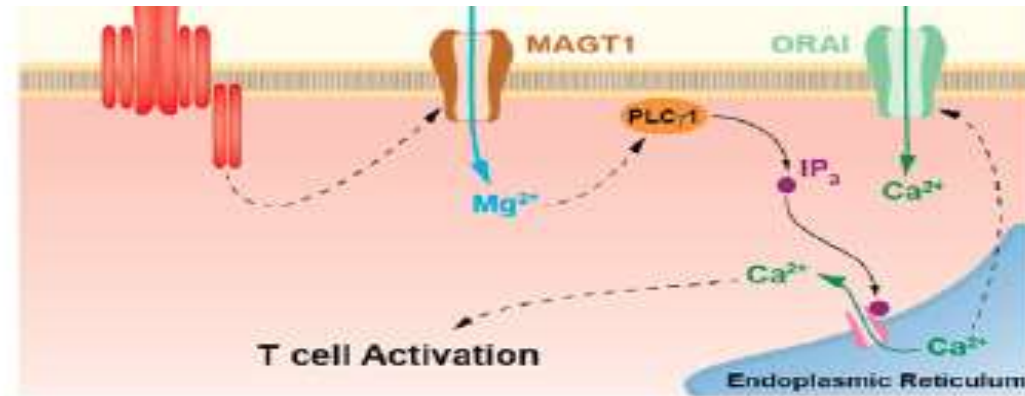
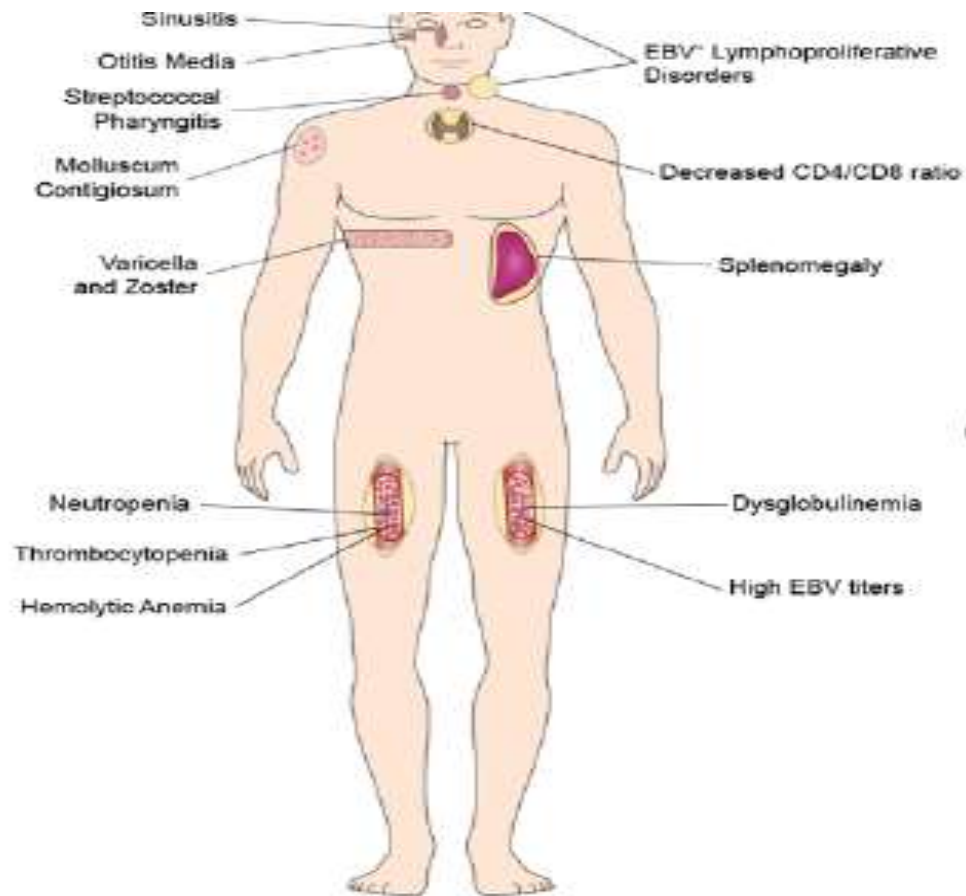


REVIEW ARTICLE

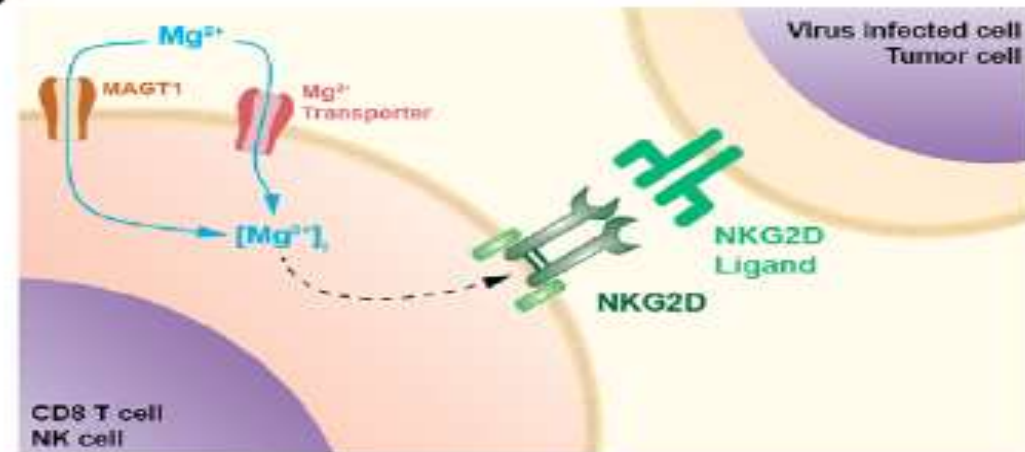
Hypothesis: Human papillomavirus vaccination syndrome—small fiber neuropathy and dysautonomia could be its underlying pathogenesis

Manuel Martínez-Lavín¹

XMEN- X-linked Primary Immunodeficiency with Mg²⁺, EBV infection, & Neoplasia

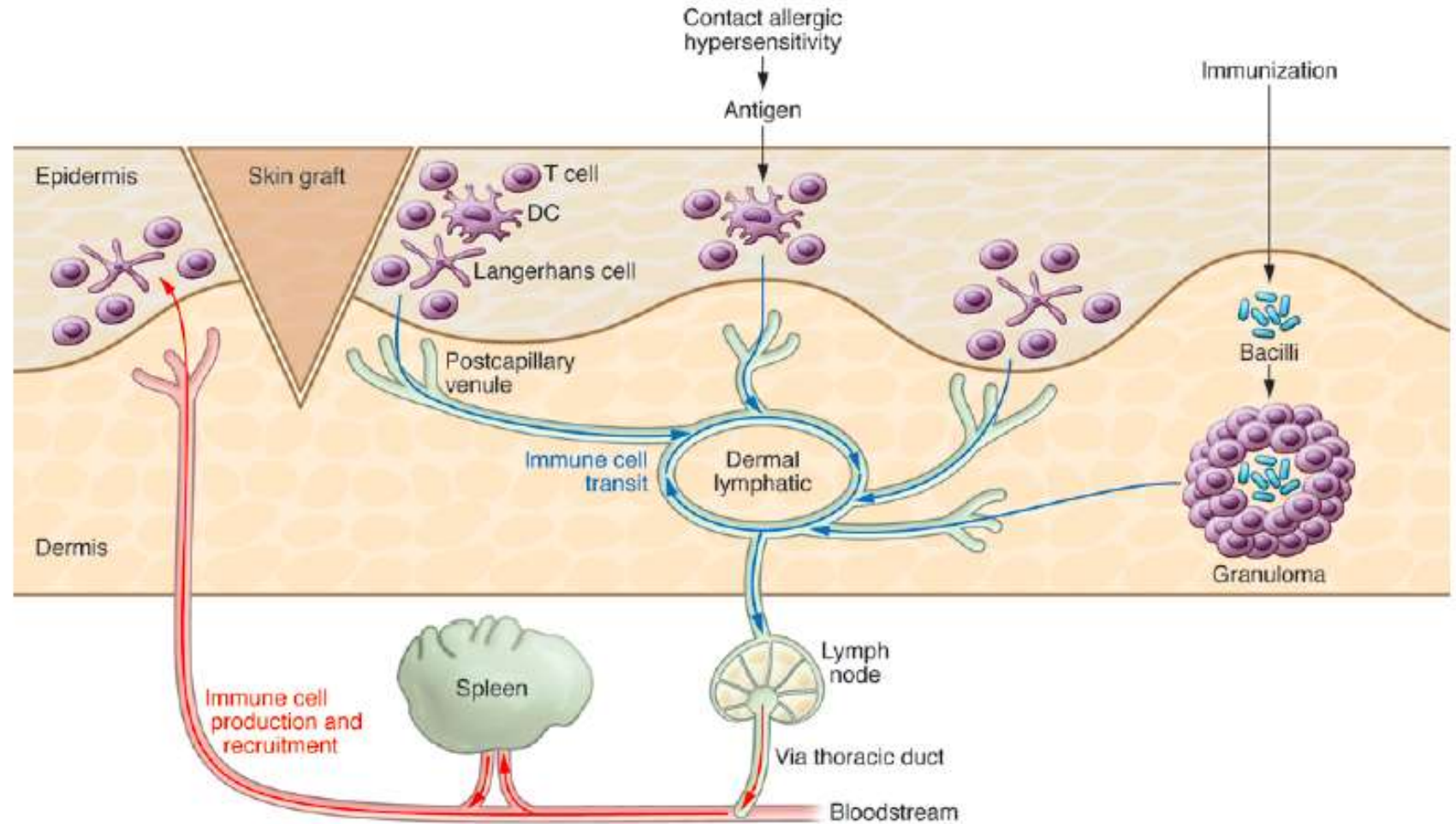


C

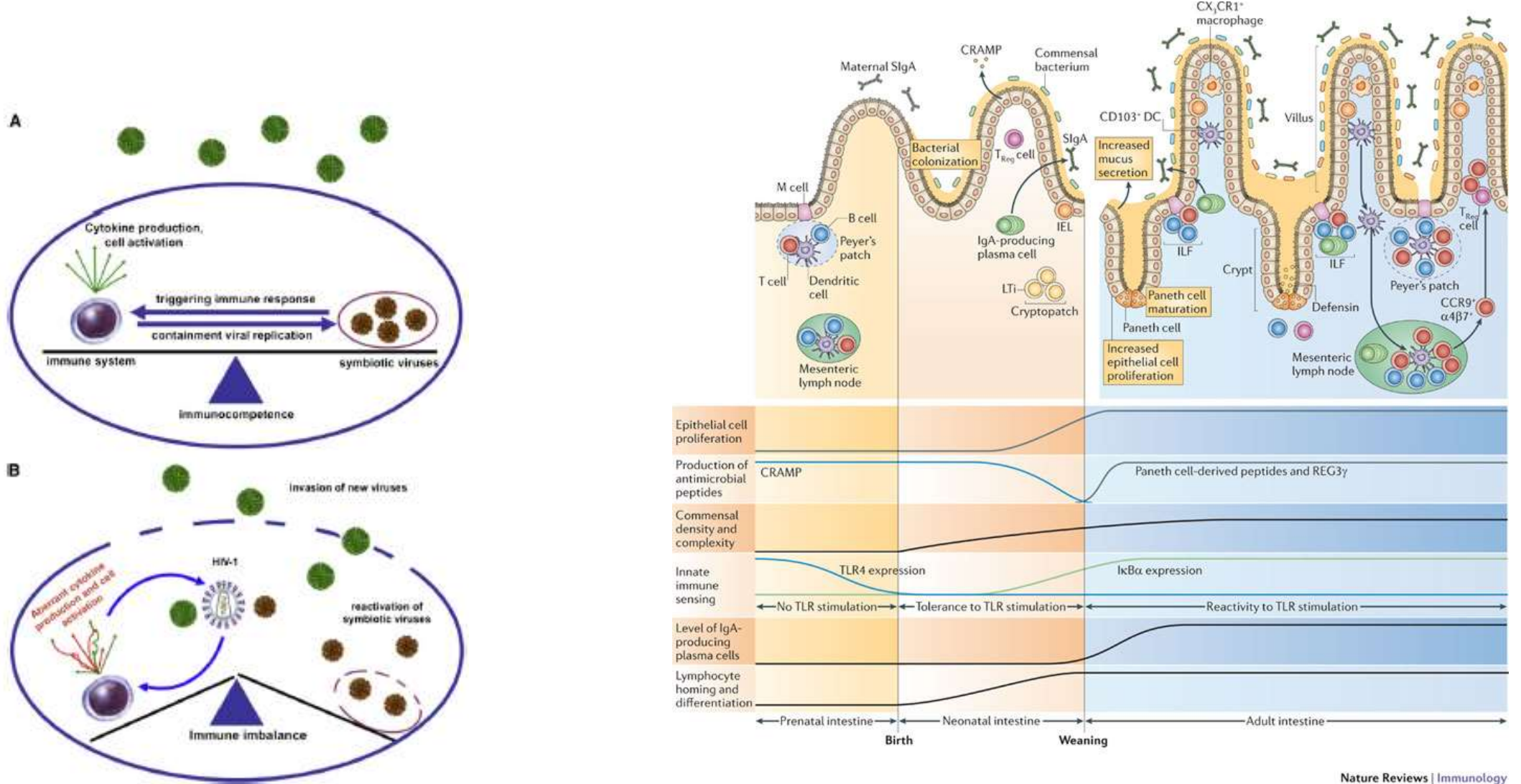


Mg²⁺ Transporter deficiency results in defective T and NK cell Function

“Glymphatics”/Lymphatics: Cleansing Systems Of the Brain



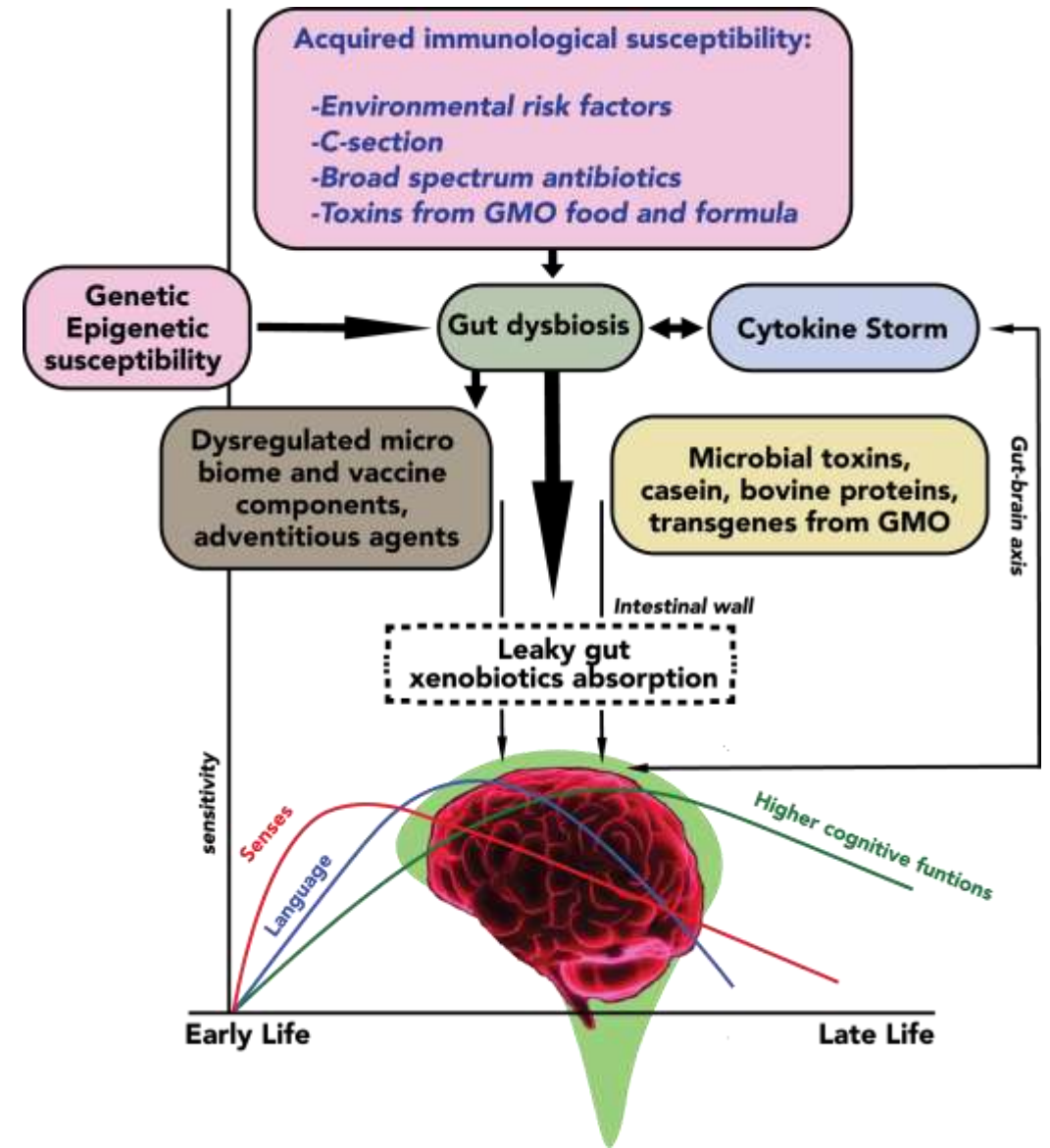
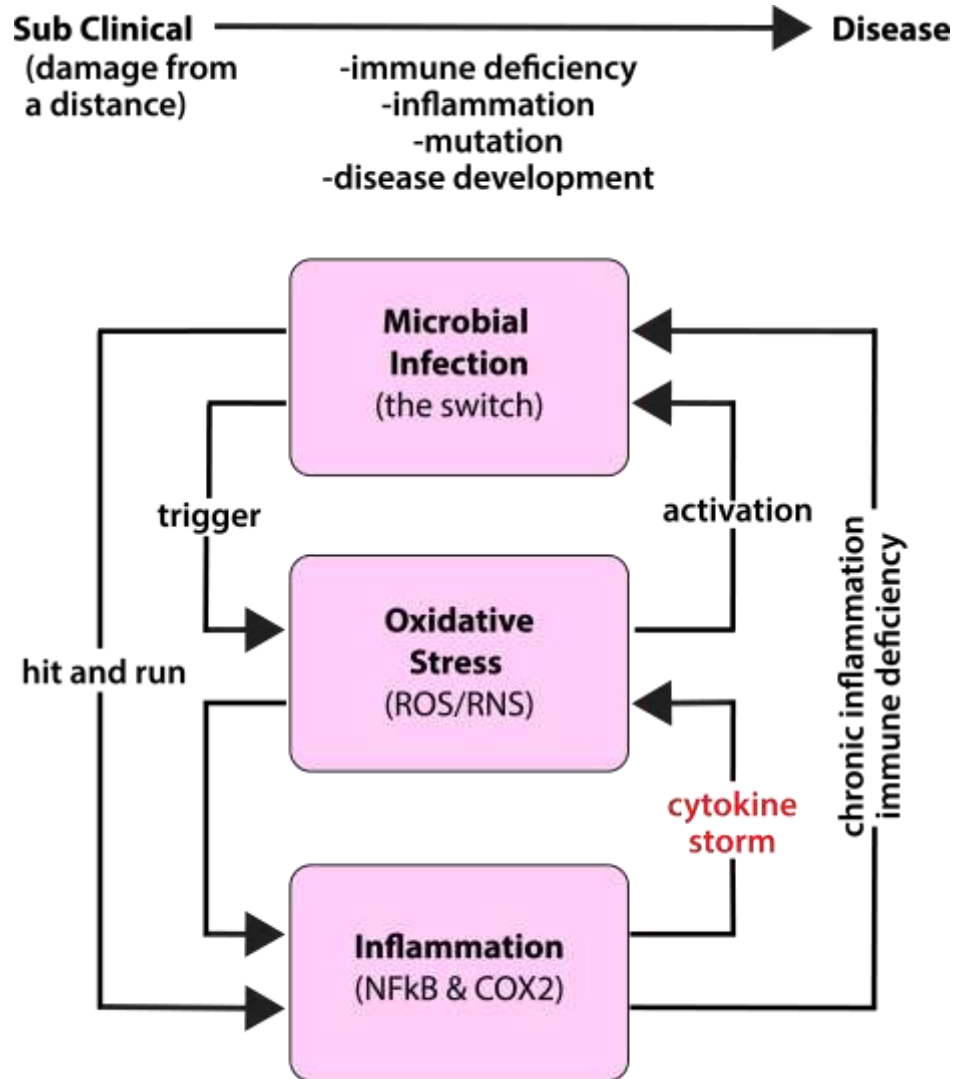
WAR And PEACE Between Microbes: Borrelia Interactions with Co-infecting Viruses ,Vaccines and Environmental toxins



Microbiota: No Longer Sterile inflammation: a Key Partner in Prevention and Treatment of Chronic Diseases

Inflammatory Insults on Genetic and Epigenetic Susceptible Populations:

The Disease Engine



- CONCLUSIONS: Stepping Outside of the Box
- Considering Chronic Neuroimmune diseases emerging in last 4 decades as Acquired Immune Deficiencies
- Utilizing advances in technology to drive paradigm shifts in understanding of basic biology affords incredible opportunity to end the suffering and restore quality lives to millions worldwide