

# Integrative & Personalised Medicine 23

29 June - 1 July 2023 • London UK

## Long Covid Pathogen Reactivation: Testing and Therapeutic Options

**Armin Schwarzbach MD PhD**

Medical Doctor and Specialist for Laboratory Medicine

### ArminLabs

Laboratory for tick-borne diseases

Tel. 0049 821 2182879

[info@arminlabs.com](mailto:info@arminlabs.com)

[www.arminlabs.com](http://www.arminlabs.com)



[www.aonm.org](http://www.aonm.org)



[info@aonm.org](mailto:info@aonm.org)  
0044 3331 21 0305

# Agenda

---

- **Pathogen reactivation**
  - **DNA viruses**
  - RNA viruses
  - Bacteria
  
- Testing
  
- Therapeutic options

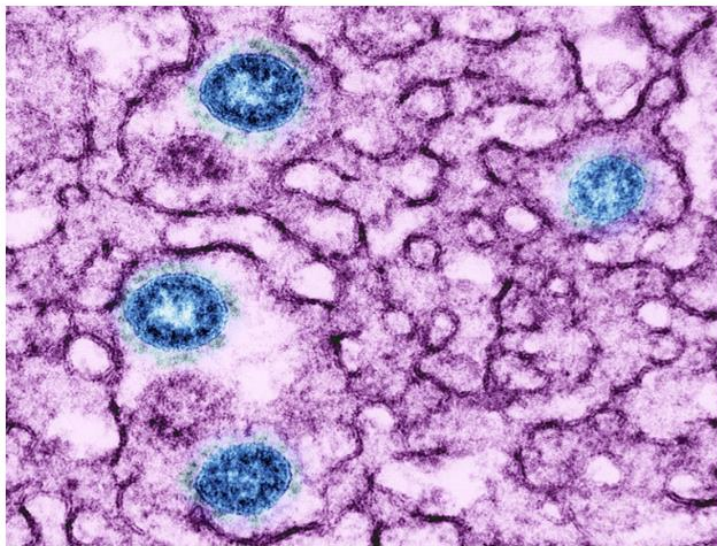
# Recent study Aug. 2022 investigating the link between Long COVID and herpes viruses

NEWS | 25 August 2022

## Could long COVID be linked to herpes viruses? Early data offer a hint

Low cortisol levels and herpes-virus reactivation are associated with prolonged COVID-19 symptoms, preliminary research suggests.

Emily Waltz



Particles of the SARS-CoV-2 virus (blue) inside an infected cell. Credit: NIH/SPL

“Most strikingly, the study found ... hints that in people with long COVID, **Epstein-Barr virus**, which can cause mononucleosis, and **Varicella Zoster virus**, which causes chickenpox and shingles, might recently have been **‘reactivated’**. **Both** of these viruses are in the herpes family, persist indefinitely in the body after infection and **can start to multiply again after a period of quiescence.**”

Source: <https://www.nature.com/articles/d41586-022-02296-5#:~:text=Low%20cortisol%20levels%20and%20herpes,19%20symptoms%2C%20preliminary%20research%20suggests.&text=Researchers%20looking%20for%20biological%20drivers,of%20a%20stress%20hormone1.>

# "Long COVID Symptoms Likely Caused by Epstein-Barr Virus Reactivation"

> Pathogens. 2021 Jun 17;10(6):763. doi: 10.3390/pathogens10060763.

## Investigation of Long COVID Prevalence and Its Relationship to Epstein-Barr Virus Reactivation

Jeffrey E Gold <sup>1</sup>, Ramazan A Okyay <sup>2</sup>, Warren E Licht <sup>3</sup>, David J Hurley <sup>4</sup>

Affiliations + expand

PMID: 34204243 PMCID: PMC8233978 DOI: 10.3390/pathogens10060763

[Free PMC article](#)

### Abstract

Coronavirus disease 2019 (COVID-19) patients sometimes experience long-term symptoms following resolution of acute disease, including fatigue, brain fog, and rashes. Collectively these have become known as long COVID. Our aim was to first determine long COVID prevalence in 185 randomly surveyed COVID-19 patients and, subsequently, to determine if there was an association between occurrence of long COVID symptoms and reactivation of Epstein-Barr virus (EBV) in 69 COVID-19 patients recruited from 30.3% (56/185), which COVID symptoms. No control subjects in our for EBV early antigen-significant ( $p < 0.001$ , subjects 21-90 days of or concurrently with C may not be a direct re induced EBV reactivati...

**66.7%** 

OF LONG COVID SUBJECTS WERE POSITIVE FOR EBV REACTIVATION BASED ON POSITIVE EBV EARLY ANTIGEN-DIFFUSE IGG, OR EBV VIRAL CAPSID ANTIGEN IGM TITRES.

We found that **66.7% (20/30)** of long-term long COVID subjects versus **10% (2/20)** of long-term control subjects were positive for EBV reactivation

"We found similar rates of EBV reactivation in those who had long COVID symptoms for months, as in those with long COVID symptoms that began just weeks after testing positive for COVID-19," said coauthor David J. Hurley, PhD, a professor and molecular microbiologist at the University of Georgia. **"This indicated to us that EBV reactivation likely occurs simultaneously or soon after COVID-19 infection."**

Source: <https://pubmed.ncbi.nlm.nih.gov/34204243/>; <https://www.news-medical.net/news/20210623/Epstein-Barr-virus-reactivation-may-be-the-cause-of-long-COVID-symptoms.aspx>; <https://world.org/EBV/>

# High EBV results post COVID, backed up by hundreds of lab tests

## EBV EliSpot (lytic+latent)

**1 EBV EliSpot (lytic) ! 657 SI**

0-1 = negative

2-3 = weak positive

> 3 = positive

**1 EBV EliSpot (latent) ! 65 SI**

0-1 = negative

2-3 = weak positive

> 3 = positive

The result of the EliSpot test indicates current cellular activity against Epstein-Barr-Virus (EBV).

Explanation of EBV antigens:

EBV-lytic antigen: sign for replication of infectious EBV virions

EBV-latent antigen: sign for EBV latency with no production of infectious EBV virions

# CMV reactivation and virus-induced immune dysfunction may be underestimated as a driver


**BMC** Part of Springer Nature

## Immunity & Ageing

[Home](#) [About](#) [Articles](#) [Submission Guidelines](#)

Commentary | [Open Access](#) | [Published: 12 March 2021](#)

### Does reactivation of cytomegalovirus contribute to severe COVID-19 disease?

Cecilia Söderberg-Nauclér 

*Immunity & Ageing* **18**, Article number: 12 (2021) | [Cite this article](#)

25k Accesses | 18 Citations | 29 Altmetric | [Metrics](#)

#### Abstract

The majority of people infected with SARS-CoV-2 are asymptomatic or have mild to moderate symptoms. However, for unknown reasons, about 15 % have severe pneumonia requiring hospital care and oxygen support, and about 5 % develop acute respiratory distress syndrome, septic shock, and multiorgan failure that result in a high mortality rate. The risk of severe COVID-19 is highest among those who are over 70 years of age. Why severe COVID-19 develops in some people but not others is not understood. Could some cases involve reactivation of latent cytomegalovirus (CMV)?

Source: [1. Söderberg-Nauclér, C. Does reactivation of cytomegalovirus contribute to severe COVID-19 disease?. \*Immun Ageing\* \*\*18\*\*, 12 \(2021\). <https://doi.org/10.1186/s12979-021-00218-z>; 2. <https://pubmed.ncbi.nlm.nih.gov/35101103/>](#)

“CMV reactivation and virus induced immune dysfunction may be under-estimated as a driver of immuno-pathogenesis in patients with severe COVID-19.”<sup>1</sup>

“... diagnosing CMV in COVID-19 patients could be well worth the effort.”<sup>1</sup>

“Intriguingly, severe acute respiratory syndrome coronavirus 2 and cytomegalovirus may potentiate each other, since they share some innate immune pathways.”<sup>2</sup>

# Our lab and others are seeing a definite correlation between COVID/Long COVID and CMV reactivation

## CMV EliSpot

1 CMV EliSpot ! 13 SI

0-1 = negative  
2-3 = weak positive  
> 3 = positive

The result of the EliSpot test indicates current cellular activity against Cytomegalo-Virus.

**May 2019, before COVID diagnosis**

## CMV EliSpot

1 CMV Lytisch ! 279 SI

0-1 = negative  
2-3 = weak positive  
> 3 = positive

1 CMV Latent ! 79 SI

0-1 = negative  
2-3 = weak positive  
> 3 = positive

The result of the EliSpot test indicates current cellular activity against Cytomegalo-Virus.

Explanation of CMV antigens:

CMV-lytic antigen: sign for replication of infectious CMV virions

**June 2020, after COVID**

*Source: ArminLabs results, with permission*

This document is intellectual property of Armin Schwarzbach MD PhD.  
Reproduction only with permission. Please note the copyright.

# Herpes Simplex Virus also reactivating with COVID-19



Article

## Herpes Simplex Virus Re-Activation in Patients with SARS-CoV-2 Pneumonia: A Prospective, Observational Study

Erica Franceschini <sup>1,\*</sup>, Alessandro Cozzi-Lepri <sup>2</sup>, Antonella Santoro <sup>1</sup>, Erica Bacca <sup>3</sup>, Guido Lancellotti <sup>3</sup>, Marianna Menozzi <sup>1</sup>, William Gennari <sup>4</sup>, Marianna Meschiari <sup>1</sup>, Andrea Bedini <sup>1</sup>, Gabriella Orlando <sup>1</sup>, Cinzia Puzzolante <sup>1</sup>, Margherita Digaetano <sup>1</sup>, Jovana Milic <sup>3</sup>, Mauro Codeluppi <sup>5</sup>, Monica Pecorari Federica Carli <sup>1</sup>, Gianluca Cuomo <sup>1</sup>, Gaetano Alfano <sup>6</sup>, Luca Corradi <sup>1</sup>, Roberto Tonelli <sup>7</sup>, Nicola Stefano Busani <sup>9</sup>, Emanuela Biagioni <sup>9</sup>, Irene Coloretto <sup>9</sup>, Giovanni Guaraldi <sup>3</sup>, Mario Sarti <sup>4</sup>, Mari Enrico Clini <sup>7</sup>, Massimo Girardis <sup>9</sup>, Inge C. Gyssens <sup>11,12</sup> and Cristina Mussini <sup>1,3,\*</sup>

Rheumatology International (2022) 42:1523–1530  
<https://doi.org/10.1007/s00296-022-05146-9>

Rheumatology  
INTERNATIONAL

OBSERVATIONAL RESEARCH



### Herpesvirus infections and post-COVID-19 manifestations: a pilot observational study

Svitlana Zubchenko <sup>1</sup>, Iryna Kril <sup>1</sup>, Olena Nadizhko <sup>1</sup>, Oksana Matsyura <sup>1</sup>, Valentyna Chopyak <sup>1</sup>

Received: 17 March 2022 / Accepted: 5 May 2022 / Published online: 1 June 2022  
 © The Author(s), under exclusive licence to Springer-Verlag GmbH Germany, part of Springer Nature 2022

#### Abstract

The global spread of SARS-CoV-2 points to unrivaled mutational variation of the virus, contributing to a variety of post-COVID sequelae in immunocompromised subjects and high mortality. Numerous studies have reported the reactivation of "sluggish" herpes virus infections in COVID-19, which exaggerate the course of the disease and complicate with lasting post-COVID manifestations CMV, EBV, HHV6. This study aimed to describe clinical and laboratory features of post-COVID manifestations accompanied by the reactivation of herpes virus infections (CMV, EBV, HHV6). 88 patients were recruited for this study, including subjects with reactivation of herpes viruses, 68 (72.3%) (main group) and 20 (27.7%) subjects without detectable DNA of herpesviruses (control group): 46 (52.3%) female and 42 (47.7%) male; median age was 41.4 ± 6.7 years. Patients with post-COVID manifestations presented with reactivation of EBV in 42.6%, HHV6 in 25.0%, and EBV plus HHV6 in 32.4%. Compared with controls, patients with herpes virus infections presented with more frequent slight fever temperature, headache, psycho-neurological disorders, pulmonary abnormalities and myalgia ( $p < 0.01$ ), activation of liver enzymes, elevated CRP and D-dimer, and suppressed cellular immune response ( $p \leq 0.05$ ). Preliminary results indicate a likely involvement of reactivated herpes virus infections, primarily EBV infections in severe COVID-19 and the formation of the post-COVID syndrome. Patients with the post-COVID syndrome and reactivation of EBV and HHV6 infections are at high risk of developing various pathologies, including rheumatologic diseases.

**Keywords** COVID-19 · Herpes virus · Epstein–Barr virus · Rheumatology · An autoimmune disease

**“Conclusions: our study shows a high incidence of HSV-1 reactivation both virologically and clinically in patients with SARS-CoV-2 severe pneumonia”<sup>1</sup>**

Source: 1. <https://pubmed.ncbi.nlm.nih.gov/34576791/>; <https://pubmed.ncbi.nlm.nih.gov/34202515>

This document is intellectual property of Armin Schwarzbach MD PhD.  
 Reproduction only with permission. Please note the copyright.



# August 2022: Reactivation of HHV-6 and EBV

## JOURNAL OF MEDICAL VIROLOGY

SHORT COMMUNICATION | [Free Access](#)

### Presence and clinical impact of human herpesvirus-6 infection in patients with moderate to critical coronavirus disease-19

Katia Lino, Lilian S. Alves, Jessica V. Raposo, Thalia Medeiros, Cintia F. Souza, S. de Paula, Jorge R. Almeida [✉](#)

First published: 14 October 2021 | <https://doi.org/10.1002/jmv.27392>

**Cohort of 67: “We found that 15/67 (22.4%) patients had detectable EBV and 3/67 (4.5%) had detectable HHV-6”**

► *Viruses*. 2022 Aug 25;14(9):1872. doi: 10.3390/v14091872.

### Epstein-Barr Virus and Human Herpesvirus-6 Reactivation in Acute COVID-19 Patients

Bailey Brooks <sup>1,2</sup>, Christina Tancredi <sup>2</sup>, Yufeng Song <sup>2</sup>, Alemu Tekewe Mogus <sup>2</sup>, Meei-Li W Huang <sup>3</sup>, Haiying Zhu <sup>3</sup>, Tuan L Phan <sup>4,5</sup>, Harrison Zhu <sup>5,6</sup>, Alexandra Kadl <sup>7,8</sup>, Judith Woodfolk <sup>7,9</sup>, Keith R Jerome <sup>3,10</sup>, Steven L Zeichner <sup>2,9</sup>

Affiliations [+](#) expand

PMID: 36146679 PMID: PMC9504756 DOI: 10.3390/v14091872

[Free PMC article](#)

#### Abstract

Beyond their pulmonary disease, many COVID-19 patients experience a complex constellation of characteristics, including hyperinflammatory responses, autoimmune disorders, and coagulopathies. However, the pathogenesis of these aspects of COVID-19 is obscure. More than 90% of people are latently infected with the lymphotropic herpesviruses Epstein-Barr Virus (EBV) and/or Human Herpesvirus-6 (HHV-6). Some of the inflammatory features of COVID-19 resemble clinical syndromes seen during EBV and HHV-6 infection, and these latent viruses can be reactivated by inflammatory mediators. We hypothesized that EBV and HHV-6 reactivation might be a common feature of early COVID-19, particularly in patients with more inflammation. We tested for EBV and HHV-6 reactivation in 67 patients acutely hospitalized with COVID-19 using previously validated quantitative PCR assays on the plasma. In our cohort, we found that 15/67 (22.4%) patients had detectable EBV and 3/67 (4.5%) had detectable HHV-6. This frequency of activation is somewhat more than the frequency

Source: <https://pubmed.ncbi.nlm.nih.gov/36146679/>

This document is intellectual property of Armin Schwarzbach MD PhD.  
Reproduction only with permission. Please note the copyright.

# Agenda

---

- **Pathogen reactivation**
  - DNA viruses
  - **RNA viruses**
  - Bacteria
  
- Testing
  
- Therapeutic options

# Coxsackie virus and myocarditis/pericarditis as coinfections in COVID-19

Fulminant myocarditis as an early presentation of SARS-CoV-2

[Tamara Naneishvili](#),<sup>1</sup> [Arsalan Khalil](#),<sup>1</sup> [Ryan O'Leary](#),<sup>2</sup> and [Neeraj Prasad](#)<sup>1</sup>

[▶ Author information](#) [▶ Article notes](#) [▶ Copyright and License information](#) [Disclaimer](#)

This article has been [cited by](#) other articles in PMC.

## Abstract

Myocarditis is well known to be caused by viral infections such as herpes virus 6 and parvovirus B19. However, during the current emerging outbreak of SARS-CoV-2, there have been few case reports describing myocarditis as a possible presentation. In our case re-

“Myocarditis is well known to be caused by viral infections such as **Coxsackie virus group B**, human herpes virus 6 and parvovirus B19.”<sup>1</sup>

“Both types of [**Coxsackie**]viruses (A and B) can cause meningitis, myocarditis, and pericarditis”<sup>2</sup>

[Journal List](#) > [Elsevier Public Health Emergency Collection](#) > PMC8503119

Elsevier Public Health Emergency Collection

Public Health Emergency COVID-19 Initiative

[Chest](#). 2021 Oct; 160(4): A976.

Published online 2021 Oct 11. doi: [10.1016/j.chest.2021.07.909](https://doi.org/10.1016/j.chest.2021.07.909)

PMCID: PMC8503119

COVID-19 AND COXSACKIE B COINFECTION: A RARE CASE OF ACUTE PERICARDITIS

[AMANDA ENG](#), [NIKISHA PANDYA](#), and [RATTAN PATEL](#)

... this is the first case presenting **pericarditis** caused by **COVID 19** and **Coxsackieviruses B (CV-B)** coinfection.

Source: 1. <https://pubmed.ncbi.nlm.nih.gov/32928810/>; 2. [https://www.medicinenet.com/coxsackie\\_virus/article.htm](https://www.medicinenet.com/coxsackie_virus/article.htm); <https://www.ncbi.nlm.nih.gov/labs/pmc/articles/PMC8503119/>; [https://www.ncbi.nlm.nih.gov/pmc/articles/PMC8330013/pdf/IETT\\_0\\_1952985.pdf](https://www.ncbi.nlm.nih.gov/pmc/articles/PMC8330013/pdf/IETT_0_1952985.pdf);

# Reactivation of Enteroviruses (Coxsackie, Echovirus) also evident in many cases

Analysis	Result	Units	Reference Range	Chart
EBV-latent antigen: sign for EBV latency with no production of infectious EBV virions				
<b>Coxsackie IgG-/IgA-antibodies</b>				
4 Coxsackie-IgG Typ A7 (IFT)	+	1:10000	< 1:100	[ ..... *>
4 Coxsackie-IgG Typ B1 (IFT)	+	1:10000	< 1:100	[ ..... *>
7 Coxsackie-Virus IgA A7 (IFT)	+	1:10	< 1:10	[ ..... *>
7 Coxsackie-Virus IgA B1 (IFT)	+	1:100	< 1:10	[ ..... *>

The specific positive Coxsackie-Virus Type A7/B1-IgG-/IgA-antibodies indicate current humoral immune responses against Coxsackie-Virus Type A7 and Coxsackie-Virus Type B1 (recent infection with Coxsackie-Virus Type A7/B1?).

The test system is highly specific for Coxsackie Virus antibodies. Other Enterovirus antibodies (for example Echovirus IgG/IgA-antibodies) are not detectable.

(for example Echovirus IgG/IgA-antibodies) are not detectable.

validated by  
Dr.Armin Schwarzbach

Source: ArminLabs results, with permission

# Agenda

---

- **Pathogen reactivation**
  - DNA viruses
  - RNA viruses
  - **Bacteria**
  
- Testing
  
- Therapeutic options

# Can Covid lead to reactivation of Lyme Disease?

www.nature.com/scientificreports

## scientific reports

Check for updates

### OPEN Correlation between COVID-19 severity and previous exposure of patients to *Borrelia* spp.

Alina Szewczyk-Dąbrowska<sup>1,2</sup>, Wiktoria Budziar<sup>1</sup>, Marek Harhala<sup>1,4</sup>, Krzysztof Baniecki<sup>3</sup>, Aleksandra Pikies<sup>3</sup>, Natalia Jędruchiewicz<sup>1</sup>, Zuzanna Kaźmierczak<sup>1,4</sup>, Katarzyna Gembara<sup>1,4</sup>, Tomasz Klimek<sup>1</sup>, Wojciech Witkiewicz<sup>1</sup>, Artur Nahorecki<sup>3</sup>, Kamil Barczyk<sup>3</sup>, Marlena Kłak<sup>1</sup>, Urszula Grata-Borkowska<sup>2</sup> & Krystyna Dąbrowska<sup>1,4</sup>✉

Predictors for the risk of severe COVID-19 are crucial for patient care and control of the disease. Other infectious diseases as potential comorbidities in SARS-CoV-2 infection are still poorly understood. Here we identify association between the course of COVID-19 and Lyme disease (borreliosis), caused by *Borrelia burgdorferi* transmitted to humans by ticks. Exposure to *Borrelia* was identified by multi-antigenic (19 antigens) serological testing of patients: severe COVID-19 (hospitalized), asymptomatic to mild COVID-19 (home treated or not aware of being infected), and not infected with SARS-CoV-2. Increased levels of *Borrelia*-specific IgGs strongly correlated with COVID-19 severity and risk of hospitalization. This suggests that a history of tick bites and related infections may contribute to the risks in COVID-19. Though mechanisms of this link is not clear yet, screening for antibodies targeting *Borrelia* may help accurately assess the odds of hospitalization for SARS-CoV-2 infected patients, supporting efforts for efficient control of COVID-19.

“increased levels of *Borrelia*-specific IgGs strongly correlated with COVID-19 severity and with the risk of hospitalization”

Source: Szewczyk-Dąbrowska A et al. Correlation between COVID-19 severity and previous exposure of patients to *Borrelia* spp. Sci Rep. 2022 Sep 24;12(1):15944.

# Many luminaries in the field have seen clinical indications

Dr. Richard Horowitz: Has been alluding to this since the start of the Pandemic, many presentations and podcasts

Dr. Joe Burrascano: Yes (numerous statements in interviews)

Dr. Robert Bransfield: A Tale of Two Pandemics  
<https://aonm.org/webinars/>

Dr. Joseph Jemsek: Lyme Borreliosis Complex and COVID-19  
<https://aonm.org/view-past-webinars/>

Dr. Daniel Kinderlehrer: has heard of this “most often in association with Bartonella and Mycoplasma, both capable of causing serious autoimmune problems”

thebmj covid-19 Research Education News & Views Campaigns Job

Article Related content Article metrics Rapid responses Response

Rapid Response:  
 Re: How “long covid” is shedding light on postviral syndromes

Dear Editor,


Chronic medical conditions like M.E., Fibromyalgia, Chronic Lyme Disease/PTLDS and long COVID all share similar symptoms as your article suggests, but the implication that Lyme disease fits into the same category from an etiological point-of-view, and is not a persistent infection, nor immunological in nature requires elucidation.

Although there has been a long ongoing debate on the nature of persistent symptoms in Lyme disease, recent published research from Johns Hopkins University, the University of New Haven and Stamford University have all implicated biofilm/‘persister’ forms of Borrelia as one of the reasons why symptoms persist in this chronically ill population. Clinical studies on dapsone combination therapy as well as disulfiram as ‘persister’ drug regimens have been shown to have benefit in relieving symptoms in the CLD/PTLDS population, and the published medical literature has found up to 16 reasons why symptoms may persist. A review of the literature reveals that long COVID and chronic Lyme disease share certain etiological overlaps based on published literature, including possible persistent infection, reactivation of infection (EBV, HHV6), autoimmunity and immune dysfunction, POTS/dysautonomia, and mitochondrial dysfunction.

In the United States, 87% of our health care costs and 70% of our deaths are due to chronic disease, and chronic infections and environmental toxins are not regularly considered in the work-up. In the case of COVID, disadvantaged populations exposed to high levels of pollution fared poorly during the pandemic due to higher levels of free radical/oxidative stress, and with chronic Lyme disease, environmental toxicity

21 September 2022  
 Richard Horowitz MD  
 Internal Medicine physician  
 New York State Tick-borne Disease Working Group  
 4232 Albany Post Road, Hyde Park, NY 12538  
[Richard Horowitz MD](#)

# Considerable % of respiratory pathogens in CV-19: Chlamydia/Mycoplasma pneumoniae and others

 **CIDRAP** Center for Infectious Disease Research and Policy

News & Perspective Infectious Disease Topics Antimicrobial Stewardship Ongoing Programs


FEATURED NEWS TOPICS COVID-19 Flu Vaccines Roadmap MERS-CoV Chronic Wasting Disease

## Researchers report 21% COVID-19 co-infection rate

Filed Under: **COVID-19**  
Mary Van Beusekom | News Writer | CIDRAP News | Apr 16, 2020 [Share](#) [Tweet](#) [LinkedIn](#) [Email](#) [Print & PDF](#)

A **research letter** published yesterday in *JAMA* found that rates of COVID-19 co-infections with other respiratory pathogens are 21%, higher than previously thought, suggesting that identification of another pathogen may not rule out the presence of the novel coronavirus.

Also, a **letter** yesterday in the *Annals of Internal Medicine* detailing survey results on 272 primary care physicians in Lombardy, Italy, who cared for about 400,000 COVID-19 patients found that 40% had symptoms suggestive of the disease, and most had to buy their own personal protective equipment (PPE) and educate themselves on coronavirus management.



Mohammed Haneefa Nizamudeen / iStock

**Co-infection rate higher than thought**  
Early in the pandemic, reports from China indicated that co-infection of COVID-19 and other respiratory pathogens was uncommon, suggesting that patients who tested positive for other pathogens could be assumed to not have the novel coronavirus.

Some sites tested the specimens for COVID-19 as well as influenza A and B, respiratory syncytial virus (RSV), non-COVID-19 coronaviruses, adenovirus, parainfluenza 1 through 4, human metapneumovirus, rhinovirus/enterovirus, *Chlamydia pneumoniae*, and *Mycoplasma pneumoniae*.

Source: <https://www.cidrap.umn.edu/news-perspective/2020/04/researchers-report-21-covid-19-co-infection-rate;>  
[https://www.clinicalmicrobiologyandinfection.com/article/S1198-743X\(20\)30494-8/fulltext](https://www.clinicalmicrobiologyandinfection.com/article/S1198-743X(20)30494-8/fulltext)



# Agenda

---

- Pathogen reactivation
  - DNA viruses
  - RNA viruses
  - Bacteria
  
- **Testing**
  
- Therapeutic options

# NEW: ArminLabs Post-COVID Viral Reactivation Panels: Basic and Advanced

arminlabs



## Post-COVID Reactivated Infection Panels

PATIENT INFORMATION		BARCODE (Lab use only)	ORDERING DR/PRACT
Patient FIRST NAME:			Time of Blood Draw:
Patient SURNAME:		Clinic:	
DATE OF BIRTH (DD/MM/YYYY):		Date (DD/MM):	Street Address:
SEX (please circle): nonbinary    male    female			Material/Quantity <input type="checkbox"/> CPDA (yellow)
Street Address:		<input type="checkbox"/> Serum (orange)	County:
Postcode:	City:		Tel no:
County:	Country:	<b>AONM HELPLINE:</b> <b>+44 (0) 3331 210 305</b>	
Tel no:			
Email:			

Basic: Post-COVID Viral Reactivation Panel		
<input type="checkbox"/>	EBV EliSpot, t-cell test, lytic only	CPDA
	CMV EliSpot, t-cell test, lytic only	CPDA
	VZV IgG/IgM/IgA antibodies	Serum
	Coxsackie A7 & B1 IgG/IgA antibodies	Serum

# Advanced reactivated infection panel includes further viruses, and bacteria

Advanced: Post-COVID Reactivated Infection Panel		
☐	EBV EliSpot, t-cell test, lytic only	CPDA
	CMV EliSpot, t-cell test, lytic only	CPDA
	VZV IgG/IgM/IgA antibodies	Serum
	Coxsackie A7 & B1 IgG/IgA antibodies	Serum
	HSV 1 & 2 IgG/IgM/IgA antibodies	Serum
	HHV6 EliSpot, t-cell test	CPDA
	Chlamydia pneumoniae IgG/IgA antibodies	Serum
	Mycoplasma pneumoniae IgG/IgA antibodies	Serum

# Electronic checklist helps decide which coinfections to test for in Post-COVID; fills automatically



Name, first name \_\_\_\_\_ Date (DD/MM/YYYY) \_\_\_\_\_

Your current and former symptoms Please click on the boxes next to the symptoms that you suffer from		X
1	Stomach ache, gut problems	<input type="checkbox"/>
2	Anaemia	<input type="checkbox"/>
3	Diarhoea intermittent, intestinal crampings/pain	<input type="checkbox"/>
4	Fever or feverish feeling	<input type="checkbox"/>
5	Lack of concentration, memory loss, forgetfulness	<input checked="" type="checkbox"/>
6	Encephalitis/inflammation of the brain	<input type="checkbox"/>
7	Yellowish colour of the skin/eyes	<input type="checkbox"/>
8	Painful joints or swollen joints	<input checked="" type="checkbox"/>
9	General aches and pains, tendon problems	<input type="checkbox"/>
10	Flu-like symptoms	<input checked="" type="checkbox"/>
11	Rash(es), striae, exanthema	<input type="checkbox"/>
12	Small red/purple spots of the skin	<input type="checkbox"/>
13	Heart problems, disturbed cardiac rhythm	<input type="checkbox"/>
14	Cough, expectoration, "air-hunger"	<input type="checkbox"/>
15	Headache, dizziness	<input type="checkbox"/>
16	Impaired liver function/ liver laboratory values	<input type="checkbox"/>
17	Pneumonia, bronchitis	<input type="checkbox"/>
18	Swollen lymph nodes	<input checked="" type="checkbox"/>
19	Enlargement of the spleen	<input type="checkbox"/>
20	Fatigue / exhaustion, intermittent or chronic CFS	<input checked="" type="checkbox"/>
21	Muscle pain, muscle weakness	<input type="checkbox"/>
22	Shivering, chill	<input type="checkbox"/>
23	Blurred, foggy, cloudy, flickering, double vision	<input type="checkbox"/>
24	Nausea, vomiting	<input type="checkbox"/>
25	Dark urine	<input type="checkbox"/>
26	Itching or pain when urinating	<input type="checkbox"/>
27	Tingling, numbness, "burning" sensations	<input type="checkbox"/>
28	Neck pain, neck stiffness	<input type="checkbox"/>
29	Shoulder pain	<input type="checkbox"/>

Ranked in order of priority:  
CPn, Mycoplasma and the Herpesviruses draw for first place here ↓

Below you'll find the number of the symptoms for each of the infections that we test for and the ranking, in which order you should test for them

Ranking of the infections	No. of symptoms	Rank
Chlamydia pneumoniae	4	1
Mycoplasma pneumoniae	4	1
Yersinia	2	3
Campylobacter	2	3
HSV 1/2	4	1
EBV	4	1
CMV	4	1
VZV	3	2
HHV 6	4	1
Parvovirus	3	2
Coxsackie-Virus	3	2
Echovirus	2	3

Academy of Nutritional Medicine (AONM),  
St. John's Innovation Centre, Cowley Road, Cambridge, CB4 0WJ  
info@aonm.org | 03331 210 305

W W W . A O N M . O R G



# Visit our stand B3 for the chance to win a voucher on ArminLabs testing

**arminlabs**  
DIAGNOSING TICK-BORNE DISEASES

**AONM**  
ACADEMY OF NUTRITIONAL MEDICINE

**WIN a £50 voucher!**

We have 4x ArminLabs vouchers  
worth £50 to give away

**VISIT OUR BOOTH: B3  
ENTER OUR RAFFLE TO WIN**

- Winners will be selected at random on Wednesday 05 July 2023
- Vouchers valid until 30 June 2024
- T&Cs apply

# Where to find the checklists: www.aonm.org – ArminLabs tab



# Agenda

---

- Pathogen reactivation
  - DNA viruses
  - RNA viruses
  - Bacteria
  
- Testing
  
- **Therapeutic options**

# Seminal "Frontiers" article: S1 protein in Post-COVID patients up to 15 months post infection ...



## Persistence of SARS CoV-2 S1 Protein in CD16+ Monocytes in Post-Acute Sequelae of COVID-19 (PASC) up to 15 Months Post-Infection

Bruce K. Patterson<sup>1\*</sup>, Edgar B. Francisco<sup>1</sup>, Ram Yogendra<sup>2</sup>, Emily Long<sup>1</sup>, Amruta Pise<sup>1</sup>, Hallison Rodrigues<sup>1</sup>, Eric Hall<sup>3</sup>, Monica Herrera<sup>3</sup>, Purvi Parikh<sup>4</sup>, Jose Guevara-Coto<sup>5,6</sup>, Timothy J. Triche<sup>7</sup>, Paul Scott<sup>7</sup>, Saboor Hekmati<sup>7</sup>, Dennis Maglinte<sup>7</sup>, Xaiolan Chang<sup>8</sup>, Rodrigo A. Mora-Rodriguez<sup>5</sup> and Javier Mora<sup>5</sup>

### OPEN ACCESS

#### Edited by:

Aurelio Cafaro,  
National Institute of Health (ISS), Italy

#### Reviewed by:

Suresh Palikkuth,  
University of Miami, United States  
P. W. Askenase,  
Yale University, United States  
Roberto Accinelli,  
Universidad Peruana Cayetano  
Heredia, Peru

#### \*Correspondence:

Bruce K. Patterson  
brucep@incelldx.com

#### Specialty section:

This article was submitted to  
Viral Immunology,  
a section of the journal  
Frontiers in Immunology

<sup>1</sup> Department of Research and Development, IncellDx Inc, San Carlos, CA, United States, <sup>2</sup> Department of Anesthesia, Lawrence General Hospital, Lawrence, MA, United States, <sup>3</sup> Department of Molecular Diagnostics, Bio-Rad Laboratories, Hercules, CA, United States, <sup>4</sup> Department of Allergy and Immunology, New York University (NYU) Langone Health, New York, NY, United States, <sup>5</sup> Lab of Tumor Chemosensitivity, Research Center on Tropical Diseases (CIET)/Research Center on Surgery and Cancer (DC) Lab, Faculty of Microbiology, Universidad de Costa Rica, San Jose, Costa Rica, <sup>6</sup> Department of Computer Science and Informatics (ECCI), Universidad de Costa Rica, San Jose, Costa Rica, <sup>7</sup> Department of Molecular Biology, Avrok Laboratories, Inc., Azusa, CA, United States, <sup>8</sup> Vaccine & Gene Therapy Institute and Oregon National Primate Research Center, Oregon Health & Science University, Portland, OR, United States

The recent COVID-19 pandemic is a treatment challenge in the acute infection stage but the recognition of chronic COVID-19 symptoms termed post-acute sequelae SARS-CoV-2 infection (PASC) may affect up to 30% of all infected individuals. The underlying mechanism and source of this distinct immunologic condition three months or more after initial infection remains elusive. Here, we investigated the presence of SARS-CoV-2 S1 protein in 46 individuals. We analyzed T-cell, B-cell, and monocytic subsets in both severe COVID-19 patients and in patients with post-acute sequelae of COVID-19 (PASC). The levels of both intracellular (CD14<sup>+</sup> CD16<sup>+</sup>) and non-activated monocytes (CD14<sup>+</sup> CD16<sup>+</sup>)

"This means the body has literally been sprayed with the virus and it spends 15 months, in a sense, trying to clean out the spike protein from our tissues. No wonder people have Long-COVID syndrome."

Board-certified internist and cardiologist Dr. Peter McCullough, <https://www.facebook.com/watch/?v=1149250505479349>, minute 6.18

> Clin Infect Dis. 2023 Feb 8;76(3):e487-e490. doi: 10.1093/cid/ciac722.

## Persistent Circulating Severe Acute Respiratory Syndrome Coronavirus 2 Spike Is Associated With Post-acute Coronavirus Disease 2019 Sequelae

Zoe Swank<sup>1 2 3</sup>, Yasmee Senussi<sup>1 2 3</sup>, Zachary Manickas-Hill<sup>4</sup>, Xu G Yu<sup>1 4 5</sup>, Jonathan Z Li<sup>1 5</sup>, Galit Alter<sup>4 6</sup>, David R Walt<sup>1 2 3</sup>

Confirmed a year later, in Feb. 2023 ↑

Source: Patterson BK et al. Persistence of SARS CoV-2 S1 Protein in CD16+ Monocytes in Post-Acute Sequelae of COVID-19 (PASC) up to 15 Months Post-Infection. Front Immunol. 2022 Jan 10;12:746021.



# ... so it's likely important to counter the spike protein in those suffering Long Covid/post-Covid reinfection

## Nattokinase

> [Molecules](https://doi.org/10.3390/molecules27175405). 2022 Aug 24;27(17):5405. doi: 10.3390/molecules27175405.

### Degradative Effect of Nattokinase on Spike Protein of SARS-CoV-2

Takashi Tanikawa <sup>1</sup>, Yuka Kiba <sup>2</sup>, James Yu <sup>3</sup>, Kate Hsu <sup>3</sup>, Shinder Chen <sup>3</sup>, Ayako Ishii <sup>4</sup>, Takami Yokogawa <sup>2</sup>, Ryuichiro Suzuki <sup>5</sup>, Yutaka Inoue <sup>1</sup>, Masashi Kitamura <sup>2</sup>

## Dandelion extract

New Results

Follow this preprint

**Common dandelion (*Taraxacum officinale*) efficiently blocks the interaction between ACE2 cell surface receptor and SARS-CoV-2 spike protein D614, mutants D614G, N501Y, K417N and E484K *in vitro***

Hoai Thi Thu Tran, Nguyen Phan Khoi Le, Michael Gigi, Corinna Dawid, Evelyn Lamy  
doi: <https://doi.org/10.1101/2021.03.19.435959>

See discussions, stats, and author profiles for this publication at: <https://www.researchgate.net/publication/341537951>

## Nigella sativa

Thymoquinone: shield and sword against SARS-CoV-2

Article in Precision Nanomedicine · May 2020  
DOI: 10.33218/001c.12964

## Autophagy/Mitophagy

ARTICLE

<https://doi.org/10.1038/s41467-021-24007-w>

OPEN

SARS-CoV-2-mediated dysregulation of metabolism and autophagy uncovers host-targeting antivirals

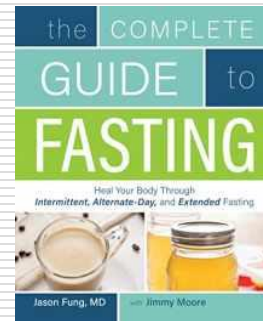
Source: Further sources available

# Supporting autophagy particularly vital because SARS-CoV-2 and reactivated pathogens disable it\*

## Interventions

### Dietary

Calorie restriction/intermittent fasting



Complete Guide To Fasting: Heal Your Body Through Intermittent, Alternate-Day, and Extended Fasting

### Exercise

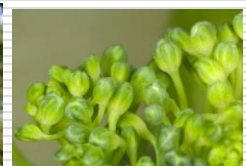
> [Front Physiol.](#) 2019 Aug 22;10:1088. doi: 10.3389/fphys.2019.01088. eCollection 2019.

**Regular Endurance Exercise Promotes Fission, Mitophagy, and Oxidative Phosphorylation in Human Skeletal Muscle Independently of Age**

Estelle Balan<sup>1</sup>, Céline Schwalm<sup>1</sup>, Damien Naslain<sup>1</sup>, Henri Nielens<sup>2</sup>, Marc Francaux<sup>1</sup>, Louise Deldicque<sup>1</sup>

### Herbal/nutraceutical

**E.g. Urolithin A, Spermidine, Resveratrol (Japanese knotweed), Curcumin, Berberine, Quercetin, Sulphurophane**



\* References on this and presentation available from [info@aonm.org](mailto:info@aonm.org)

# Monolaurin and Baicalein with evidenced antibacterial efficacy

## Monolaurin

An organic compound derived from lauric acid. Found in coconut oil (highest natural source), and breast milk. A bioactive lipid with proven antimicrobial properties.

“Monolaurin is a bioactive lipid from medium-chain fatty acids that have been proven safe for consumption, has a broad spectrum as an antibacterial, boosts the immune system, and acts as an antiviral.”<sup>1</sup>

"The most effective antimicrobial compounds against all morphological forms of the two tested Borrelia sp. were baicalein and monolaurin. This might indicate that the presence of fatty acid and phenyl groups is important for comprehensive antibacterial activity."<sup>2</sup>



### Bioactive monolaurin as an antimicrobial and its potential to improve the immune system and against COVID-19: a review

\*Subroto, E. and Indiarito, R.

Department of Food Industrial Technology, Faculty of Agro-Industrial Technology, Universitas Padjadjaran, Jl.Raya Bandung-Sumedang Km. 21, Jatinangor, Sumedang 40600, Indonesia

**Article history:**  
Received: 3 July 2020  
Received in revised form: 2 August 2020  
Accepted: 2 September 2020  
Available Online: 8 November 2020

**Keywords:**  
Monolaurin,  
Antimicrobial,  
Immune system,  
Antiviral,  
COVID-19

**DOI:**  
[https://doi.org/10.26656/fr.2017.4\(6\).324](https://doi.org/10.26656/fr.2017.4(6).324)

#### Abstract

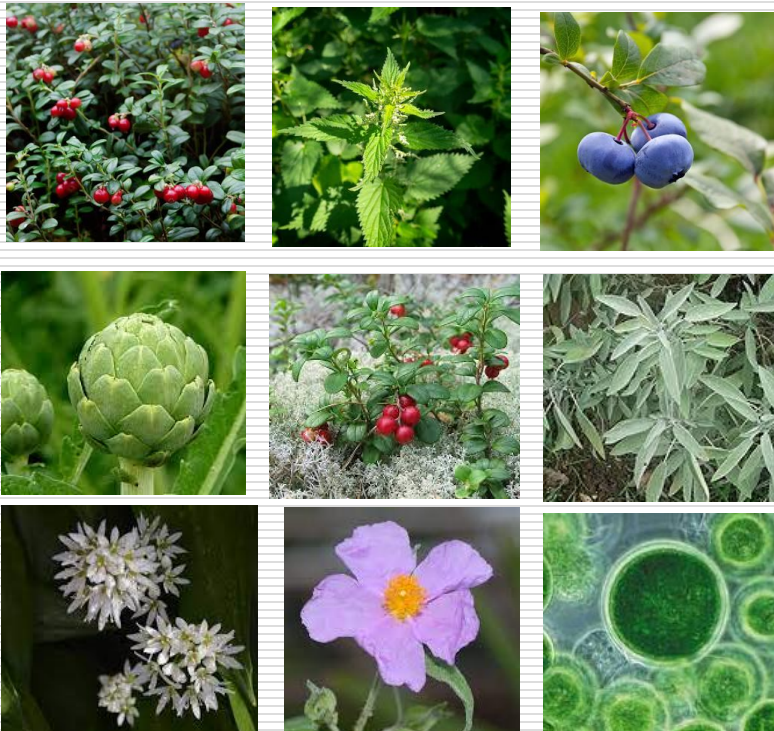
Monolaurin is monoacylglycerol which is a bioactive lipid since it can affect the human biological systems. This review discusses the bioactive properties of monolaurin, especially its role as an antibacterial, immune system enhancement, and its ability as an antiviral so that it has the potential to fight against various viral attacks. Monolaurin can act as an antibacterial in inhibiting the growth of several pathogenic bacteria, especially gram-positive bacteria. Monolaurin is known to be able to enhance the immune system through modulation of various immune systems, controlling pro-inflammatory cytokines, activating and attracting leukocytes to the site of infection. Monolaurin can also act as an antiviral, especially against enveloped viruses, such as Maedi-visna virus, vesicular stomatitis, herpes simplex-1, measles, HIV, cytomegalovirus, influenza, and corona. Monolaurin inhibits the virus through the mechanism of the disintegration of the viral membrane, prevents binding of the viral protein to the host-cell membrane, inhibits the process of assembling the viral RNA, and the process of virus maturation in the replication cycle. Therefore monolaurin has the potential for human consumption to boost the immune system and ward off various virus attacks, including severe acute respiratory syndrome coronavirus 2 (SARS-CoV-2), which is the cause of COVID-19 which became a pandemic in the world.

Sources: 1. Subroto, Edy & Indiarito, Rossi. (2020). Bioactive monolaurin as an antimicrobial and its potential to improve the immune system and against COVID-19: a review. Food Research. 4. 2355-2365. 10.26656/fr.2017.4(6).324.; 2. Goc, A., Niedzwiecki, A. and Rath, M. (2015), *In vitro evaluation of antibacterial activity of phytochemicals and micronutrients against Borrelia burgdorferi and Borrelia garinii*. J Appl Microbiol, 119: 1561–1572. doi:10.1111/jam.12970

# Many phytonutrients with action against the pleomorphic form of *Borrelia*, the “round body” or cyst form

**Chlorella pyrenoidosa, Stinging Nettle extract, Bilberry extract, Cranberry extract, Lingonberry fruit powder, Artichoke extract, Sage leaf extract, Wild garlic, *Cistus incanus***

A review of the literature reveals that long COVID and chronic Lyme disease share certain etiological overlaps based on published literature, including possible persistent infection, reactivation of infection



Microbes and Infection 18 (2016) 484–495



[www.elsevier.com/locate/micinf](http://www.elsevier.com/locate/micinf)

Original article

Pleomorphic forms of *Borrelia burgdorferi* induce distinct immune responses

Leena Meriläinen <sup>a,\*</sup>, Heini Brander <sup>a</sup>, Anni Herranen <sup>a</sup>, Armin Schwarzbach <sup>b</sup>, Leona Gilbert <sup>a</sup>

<sup>a</sup> Department of Biological and Environmental Sciences and Nanoscience Center, University of Jyväskylä, P.O. Box 35, FI-40014 Jyväskylä, Finland

<sup>b</sup> Arminlab, Zirbelstrasse 58, 86154 Augsburg, Germany

Received 12 July 2015; accepted 8 April 2016

Available online 30 April 2016

# For reactivated viral infections (1/2)

Herpes, especially Epstein Barr, Cytomegalovirus, Varicella Zoster virus

**Liquorice:** Its component glycyrrhizin is particularly responsible for its antiviral activity; “novel way to interrupt latency” of EBV<sup>1</sup>

**Andrographis paniculata:** Andrographolide, the active extract from plants of the Andrographis genus, has broad-spectrum antiviral properties: “miraculous compound to restrain virus replication and virus-induced pathogenesis ... shown to inhibit transcription of EBV IE genes and the production of EBV virions”<sup>2</sup>

**Scullcap/Baicalein:** Noted antiviral properties, also against Coxsackie<sup>3</sup>

**Dandelion:** Blocks the interaction between ACE2 cell surface receptor and SARS-CoV-2 spike protein<sup>4</sup>

**Artemisia annua:** “Artemisia annua L. extracts inhibit the *in vitro* replication of SARS-CoV-2 and two of its variants.”<sup>5</sup> “...the bioactivity of artemisinin and its semisynthetic derivative artesunate is even broader and includes the inhibition of certain viruses, such as human cytomegalovirus and other members of the *Herpesviridae* family (e.g., herpes simplex virus type 1 and Epstein-Barr virus)”<sup>6</sup>



Sources: 1. <https://www.ncbi.nlm.nih.gov/labs/pmc/articles/PMC1052015/>; 2. Gupta S et al. Broad-spectrum antiviral properties of andrographolide. Arch Virol. 2017 Mar;162(3):611-623; 2. Andrei G et al. Novel Therapeutics for Epstein-Barr Virus. Molecules. 2019 Mar 12;24(5):997; Lin, TP et al. Inhibition of the Epstein-Barr virus lytic cycle by andrographolide. Biol. Pharm. Bull. 2008, 31, 2018-2023; 3. Fu Q, Gao L, Fu X, Meng Q, Lu Z. Scutellaria baicalensis Inhibits Coxsackievirus B3-Induced Myocarditis Via AKT and p38 Pathways. J Microbiol Biotechnol. 2019 Aug 28; 4. <https://www.biorxiv.org/content/10.1101/2021.03.19.435959v1.article-info>; 5. <https://www.sciencedirect.com/science/article/pii/S0378874121002439>; 6. <https://academic.oup.com/cid/article/47/6/804/325924>. All images from Wikipedia, free to use on Commons License.

This document is intellectual property of Armin Schwarzbach MD PhD.  
Reproduction only with permission. Please note the copyright.

# For the reactivated infections (2/2)

## Herbal and nutraceutical remedies contd.

**Nigella sativa (Black Seed oil):** Black Seed oil from *Nigella sativa* seeds has been found to act against seasonal allergic rhinitis, avian influenza and cytomegalovirus.<sup>1, 2</sup> It has virucidal activity against herpes simplex<sup>3</sup>



**Quercetin** and **zinc:** Quercetin acts as an ionophore and carries the zinc deep into the cell<sup>4</sup>

**Curcumin:** Antiviral and immunomodulatory<sup>5</sup>, “improves mitochondrial dynamics regarding mitochondrial biogenesis and mitophagy”<sup>6</sup>



**Cistus incanus tea** – demonstrated antiviral action on several viruses, including SARS-CoV-2<sup>7</sup>



**The amino acid L-Lysine** appears to apply universally across the entire family of herpes viruses<sup>8</sup>

### Support for immunity/natural killer cell activity:

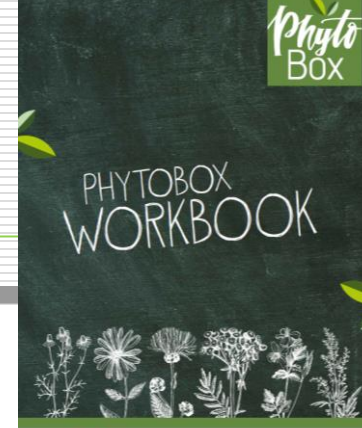
**Glutathione** – liposomal; N-Acetyl Cysteine: precursor to GSH, mucolytic and perturbs SARS-CoV-2 spike protein conformation<sup>9</sup>; releases histamine however<sup>10</sup>, beware with MCAS

### Enzymatically modified rice bran

Sources: 1. <https://pubmed.ncbi.nlm.nih.gov/23855426/>; 2. [https://pharmacologyonline.silae.it/files/newsletter/2019/vol2/ PhOL\\_2019\\_2\\_NL007\\_Molla.pdf](https://pharmacologyonline.silae.it/files/newsletter/2019/vol2/ PhOL_2019_2_NL007_Molla.pdf); 3. <https://www.sciencedirect.com/science/article/abs/pii/S0192056100000369?via%3Dihub>; 4. <https://journals.plos.org/plospathogens/article?id=10.1371/journal.ppat.1001176>; 5. <https://www.ncbi.nlm.nih.gov/labs/pmc/articles/PMC7899028/>; 6. de Oliveira MR et al. Curcumin, mitochondrial biogenesis, and mitophagy: Exploring recent data and indicating future needs. *Biotechnol Adv.* 2016;34(5):813-826; Ungvari, Z et al. (2011). 7. <https://www.sciencepublishinggroup.com/journal/paperinfo?journalid=320&doi=10.11648/j.jdmp.20210703.13>; 8. [https://www.researchgate.net/publication/344210822\\_Lysine\\_Therapy\\_for\\_SARS-CoV-2](https://www.researchgate.net/publication/344210822_Lysine_Therapy_for_SARS-CoV-2); 9 <https://chemrxiv.org/engage/apigateway/chemrxiv/assets/orp/resource/item/60c753ec4c89190f3bad43ca/original/n-acetyl-cysteine-a-tool-to-perturb-sars-co-v-2-spike-protein-conformation.pdf>; 10. <https://pubmed.ncbi.nlm.nih.gov/2409763/>; All images from Wikipedia, free to use on Commons License

This document is intellectual property of Armin Schwarzbach MD PhD.  
Reproduction only with permission. Please note the copyright.

# Many of these ingredients available in the PhytoBox range



Phyto  
Box

Phyto  
Box

NUTRINED

NutraMedix

präventa

## INGREDIENTS:



### PhytoBox NO. 01

Support for Borrelia and intracellular infective pathogens

INGREDIENTS (4 CAPSULES):	DAILY DOSAGE	%RQ*
Monolaurin	900 mg	-
Baikai skullcap extract	1000 mg	-

### PHYTOBOX NO. 02

Support for neuroborreliosis and neuropathic dysfunctions

INGREDIENTS (2 CAPSULES):	DAILY DOSAGE	%RQ*
Andropogon paniculata extract 4:1	400 mg	-
Uncaria rhyzophylla	320 mg	-
Thereof Ginsenosides	256 mg	-
Polygonum cuspidatum	168,4 mg	-
Thereof trans-Resveratrol	159,8 mg	-
Grape fruit seed extract	60 mg	-
Thereof Bioflavonoids	27 mg	-

### PHYTOBOX NO. 03

Breakdown of pleomorphic forms and support of detoxification & purification

INGREDIENTS (4 CAPSULES):	DAILY DOSAGE	%RQ*
Chlorella pyrenoidosa	800 mg	-
Stinging Nettle extract 10:1	160 mg	-
Bilberry extract	160 mg	-
Thereof Anthocyanidins	40 mg	-
Cranberry extract	160 mg	-
Thereof Polyphenols	40 mg	-
Lingonberry fruit powder	160 mg	-
Artichoke extract 12:1	160 mg	-
Thereof Cynarin	4 mg	-
Sage leaf extract 4:1	100 mg	-
Wild garlic herb extract 4:1	50 mg	-
Cistus incanus	50 mg	-

\*RQ = Reference quantity for daily intake

### PHYTOBOX NO. 04

Anti-inflammatory support

INGREDIENTS (4 CAPSULES):	DAILY DOSAGE	%RQ*
OPC Grape seed extract	200 mg	-
Thereof Polyphenols	190 mg	-
Thereof OPC	100 mg	-
Curcuma Extract	200 mg	-
Thereof Curcuminoids	180 mg	-
Thereof Curcumin	140 mg	-
Rutin Powder	189,4 mg	-
Thereof Rutin	179,8 mg	-
Polygonum cuspidatum	147,4 mg	-
Thereof trans-Resveratrol	140 mg	-

### PHYTOBOX NO. 05

Synbiotic with probiotic

INGREDIENTS (4 CAPSULES):	DAILY DOSAGE	%RQ*
Acacia fibre	1.400 mg	-
thereof dietary fibre	1.260 mg	-
Bacterial cultures	ca. 12*10 <sup>10</sup> CFUs**	-
Biotin	50 µg	100
Niacin	16 mg	100
Riboflavin	14 mg	100

\*\*CFUs = colony forming units

### PHYTOBOX NO. 06

For chronic opportunistic virus infections, especially the herpes viruses

INGREDIENTS (3 CAPSULES):	DAILY DOSAGE	%RQ*
Zinc	30 mg	100%
Triphala extract	600 mg	-
thereof tannins	240 mg	-
Propolis extract	120 mg	-
thereof flavonoids	17 mg	-
Lemon balm extract	100 mg	-
thereof rosmarinic acid	3 mg	-
Pomegranate extract	100 mg	-
thereof ellagic acid	40 mg	-
Thyme extract	80 mg	-
thereof essential oil	16 mg	-
Ginger extract	50 mg	-

### PHYTOBOX NO. 07

Support in cytokine storms

INGREDIENTS (4 CAPSULES):	DAILY DOSAGE	%RQ*
Licorice root extract	880mg	-
thereof glycyrrhizin	26mg	-
Shiitake extract	650mg	-
Black cumin extract	600mg	-
Astaxanthin	4mg	-

### PHYTOBOX NO. 08

Support in Bartonella infection

INGREDIENTS (2 CAPSULES):	DAILY DOSAGE	%RQ*
Houttuynia cordata extract 4:1	150 mg	-
Organic extract	90 mg	-
thereof rosmarinic acid	18 mg	-
Fenugreek seed 8:1 extract	75 mg	-
thereof saponins	15 mg	-
Cinnamon extract 10:1	50 mg	-
Ligustice root	27 mg	-
Willow bark dry extract	25 mg	-
thereof Salicin	3,75 mg	-
Cistus incanus extract	25 mg	-
thereof polyphenols	16,25 mg	-
Grapefruit seed extract	25 mg	-
thereof flavonoids	11,25 mg	-
Cloves 4:1 extract	17 mg	-
thereof flavonoids	11,25 mg	-
Uncaria rhyzophylla 10:1 extract	4,75 mg	-
thereof indole alkaloids	0,9 mg	-
Garlic 15:1 extract	3,5 mg	-
thereof alliin	0,9 mg	-

\*RQ = Reference quantity for daily intake



### PHYTOBOX NO. 09

Support in Chlamydia Pneumoniae Infection

INGREDIENTS (3 CAPSULES):	DAILY DOSAGE	%RQ*
Vitamin C	200 mg	250
Nasturtium extract	500 mg	-
Horseshoe root extract	500 mg	-
Chinese Lime Tree Extract	300 mg	-
White mustard extract	120 mg	-
of which Sinabin	7,2 mg	-
Barberry extract	85 mg	-

### PHYTOBOX NO. 10

NK Cell support

INGREDIENTS (4 CAPSULES):	DAILY DOSAGE	%RQ*
Vitamin C	40 mg	50
Reishi Extract	600 mg	-
Shiitake extract	600 mg	-
Spirulina Powder	350 mg	-
Cardiopsis Extract	300 mg	-
Maitake extract	300 mg	-
Ginseng root extract	35 mg	-
thereof ginsenosides	2,8 mg	-

### PHYTOBOX NO. 11

Support in Coxsackie and Echovirus infections

INGREDIENTS (3 CAPSULES):	DAILY DOSAGE	%RQ*
Elderflower extract	500 mg	-
thereof Rutin	25 mg	-
Rhodiola rosea extract	250 mg	-
thereof Salidroside	7,5 mg	-
Astragalus membranaceus root extract	250 mg	-
Organic extract	180 mg	-
thereof Rosmarinic acid	3,6 mg	-
Barberry extract	150 mg	-
Mint, Tibetan	150 mg	-
Ginkgo biloba	80 mg	-
thereof Flavone glycosides	19 mg	-
thereof ginkgolides	4,8 mg	-
St John's Wort extract	50 mg	-
thereof Hypericin	0,15 mg	-

Source: <https://shop.aonm.org/>

This document is intellectual property of Armin Schwarzbach MD PhD.  
Reproduction only with permission. Please note the copyright.

Discounts off the PhytoBox range with Code IPM20 – go to <https://shop.aonm.org/>, or ask at Stand B3



**Phyto  
Box**

**20% OFF**

*PhytoBox products*



THE RIGHT SUPPORT FOR EVERYONE

WITH CODE IPM20

- Order online: [aonm.org/shop/phytoBox](https://shop.aonm.org/shop/phytoBox)
- Offer ends 21 July



# Webinars with further information available at <https://aonm.org/view-past-webinars/>

## Scientific evidence to support the use of phytochemicals for Lyme Borreliosis

Prepared for  
AONM  
16 May 2023

Dr. Leona Gilbert, PhD,  
Docent of Cell and Molecular  
Biology  
CEO Te?ted Oy  
leona.gilbert@teztet.com  
copyright protected

@tez\_ted  
#notjustlyme



**PhytoBox 7: Phytonutrients with anti-inflammatory action**

» Support of the immune system in Cytokine Storms

**Studies on Astaxanthin:**

- Cytokine storm relief  
[https://papers.ssrn.com/sol3/papers.cfm?abstract\\_id=3579738](https://papers.ssrn.com/sol3/papers.cfm?abstract_id=3579738)

**Studies on Licorice root:**

- Reduction chemokine production  
<https://www.sciencedirect.com/science/article/pii/S056757940002499>
- Inhibition TNF alpha, iNOS, PGE  
[https://pubmed.ncbi.nlm.nih.gov/27650551/?from\\_single\\_result=27650551&pmid%5D&expanded\\_search\\_query=27650551&pmid%5D](https://pubmed.ncbi.nlm.nih.gov/27650551/?from_single_result=27650551&pmid%5D&expanded_search_query=27650551&pmid%5D)
- Inhibition IL-18  
<http://info.sights.com/phytopharmacology/files/pp4v913.pdf>

**Studies on Shitake:**

- Inhibition cytokines  
[https://pubmed.ncbi.nlm.nih.gov/32413619/?from\\_single\\_result=32413619&pmid%5D&expanded\\_search\\_query=32413619&pmid%5D](https://pubmed.ncbi.nlm.nih.gov/32413619/?from_single_result=32413619&pmid%5D&expanded_search_query=32413619&pmid%5D)

**Studies on Black cumin:**

- Modulating NF- $\kappa$ B expression in sepsis  
<https://pubmed.ncbi.nlm.nih.gov/29437018/>
- Immunomodulatory and anti-inflammatory effect (TNF alpha reduction)  
<https://pubmed.ncbi.nlm.nih.gov/29437018/>

AONM Webinar with Prof. Leona Gilbert and Markus Berger (ArminLabs)



Academy of Nutritional Medicine - ...  
2.33K subscribers

Subscribe

2



Share

Download



<https://www.youtube.com/watch?v=cpDIg9eu5mI>

This document is intellectual property of Armin Schwarzbach MD PhD.  
Reproduction only with permission. Please note the copyright.

# 5TH INTERNATIONAL CONFERENCE ON CHRONIC PATHOLOGIES: [www.chronic-pathologies.com](http://www.chronic-pathologies.com)

---

- » 15th - 17th of September 2023
- » Hybrid academic congress
- » Exchange of the latest ideas and perspectives in the field of chronic diseases
- » Town Hall Gilching [near Munich], Rathausplatz 1, 82205 Gilching



## 5TH INTERNATIONAL CONFERENCE ON CHRONIC PATHOLOGIES

- » 15th - 17th of September 2023
- » Hybrid academic congress
- » Exchange of the latest ideas and perspectives in the field of chronic diseases
- » Town Hall Gilching [near Munich], Rathausplatz 1, 82205 Gilching



---

# Thank you very much! Q&A/Discussion

**Armin Schwarzbach MD PhD**  
Medical Doctor and Specialist for Laboratory Medicine

## ArminLabs

Laboratory for tick-borne diseases

Tel. 0049 821 2182879

[info@arminlabs.com](mailto:info@arminlabs.com)

[www.arminlabs.com](http://www.arminlabs.com)



[www.aonm.org](http://www.aonm.org)



[info@aonm.org](mailto:info@aonm.org)  
0044 3331 21 0305